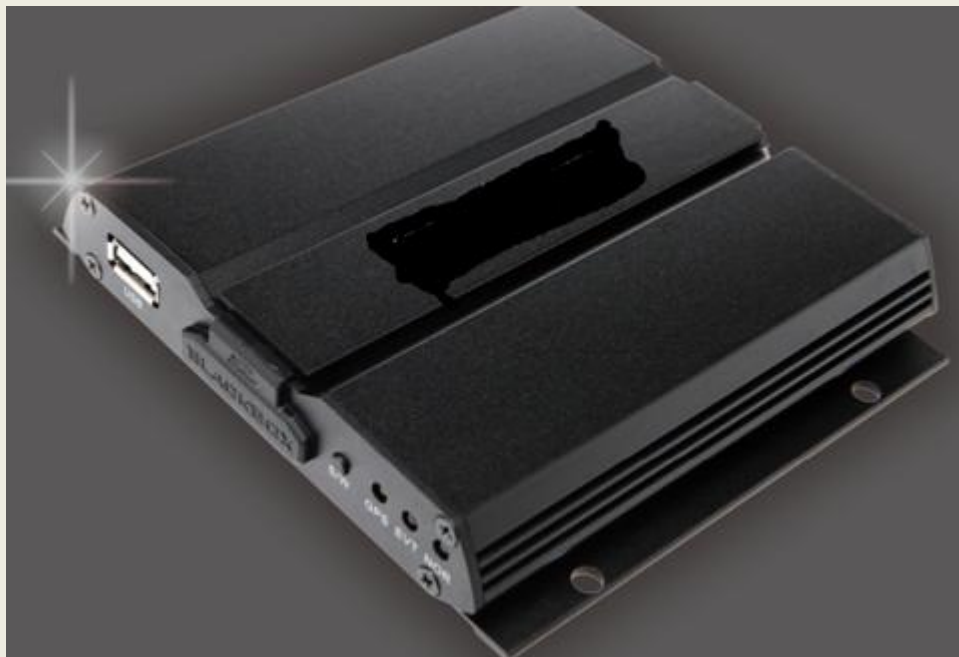


4CH

Driving Video Recorder

ST-400A Series



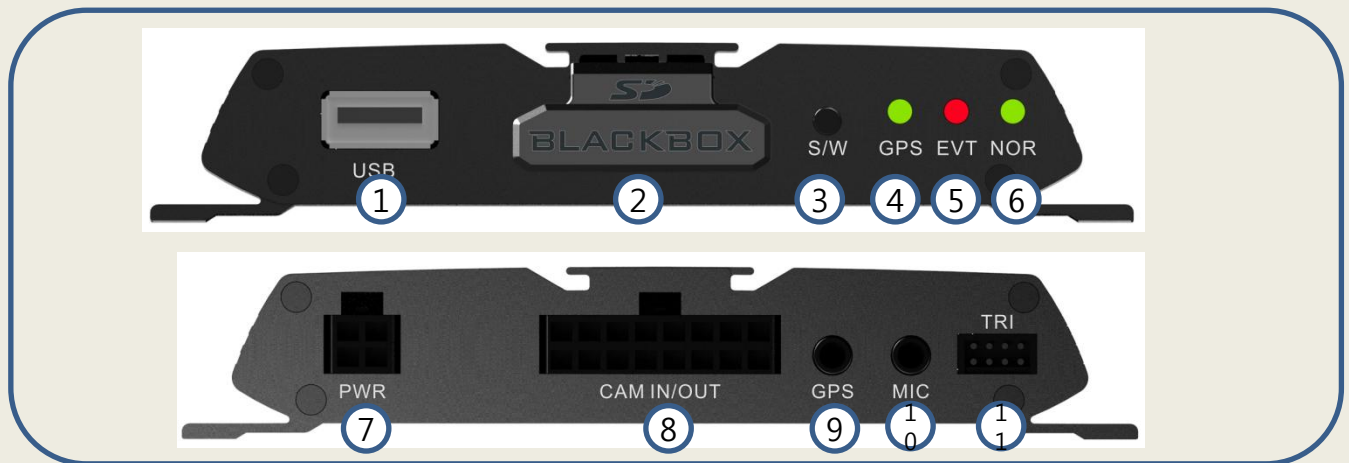
Bytech Electronics Co.,Ltd

www.bytechsnd.com

In Korea

Features

- Box type 4channel Black Box
- Support of seamlessly vivid images view of each 30fps
- Interlocking with Location, Speed, Google map by using exclusive GPS
- 3Axis shock sensor (Separated save for Event Video)
- SD card recording with excellent scalability and compatibility
- Variety option for recording (Ordinary/ Event / Parking mode / Motion Detection)
- Buzzer Alert
- Support trigger signal
- Support C-MIC
- Smart PC viewer



1. USB 2.0
2. SD Card
3. Switch
4. GPS LED
5. EVENT REC LED
6. NORMAL REC LED
7. POWER(B+/B-/ACC/ Display signal)
8. CAMERA INPUT/VIDEO OUT
9. GPS PORT
10. C-MIC PORT
11. TRIGGER(CAM1,2,3,4/SENSOR IN 1/ALARM OUT 1)

Specifications

Specifications			
Video Compression		H.264 (AVI)	
Camera Input		4CH	
Recording method		Driving Mode: Dual Recording Continuous and shock Recording)	5 minutes file generation
		Parking Mode: Event Recording(Shock and Motion)	Pre-recording 5sec, Event recording 20 sec (Total 25sec)
Recording Resolution and Frame	ST-400A	CH1: 960x480, 25fps/ CH2: 960x480, 25fps/ CH3: 960x480, 25fps/ CH4: 960x480, 25fps	
	ST-401A	CH1: 480x240, 30fps/ CH2: 480x240, 30fps/ CH3: 480x240, 30fps/ CH4: 480x240, 30fps	
Recording time	ST-400A	About 16hours / 64G	Continuous standard
	ST-401A	About 35hours / 64G	Continuous standard
Recording media		MLC method SD CARD 8 ~ 128GB	More than CLASS10
Recording Quality	ST-400A	High: 8 Mbit Middle: 6 Mbit Low: 4 Mbit	
	ST-401A	High: 3 Mbit Middle: 2 Mbit Low: 1 Mbit	
Display		Split , Trigger/Push switch interlock LIVE screen	
Audio Input		External C-MIC Support	Option
Video Output		1ch composite interface(RCA)	
Built-in 3G Shock sensor		Sensitivity adjustment 5 steps(1,2,3,4,5)	
GPS		External GPS(GPS+GLONASS)	
Trigger Signal		4ch Trigger signal interlock Live screen (Analog Camera Only)	
Display Signal		Rotate the screen by pressing the push switch	Push Switch Option
Alarm Signal		Support 1ch Alarm Out(Open Collector method)	
Time settings		Internal RTC / Automatic synchronization by GPS	
Event check		Buzzer, LED and OSD Display	
Set the parking mode	Battery Discharge voltage setting	OFF, 11.8V, 12V, 12.2V, 23.6V, 24V, 24.4V	
PC Viewer		Dedicated software	
Power	Rated voltage	DC 11V ~ 36V	
	Current consumption	DC 12V @ 200mA(MAX)	Based on main set
	Built-in battery	Super-cap (5.4V 5F), Lithium(for RTC)	
Operating temperature		-10degree ~ 60degree	
Storage temperature		-20degree ~ 70degree	
Dimensions		122(W) x 22(H) x 114(D)mm	
Accessories	Power cable	L: 2,000mm (4P: B+, B-, ACC, Display signal)	
	Trigger cable	L: 500mm	
	Video cable	L: 1,800mm, RCA to MONO Jack(3.5Pie) Cable	
	Camera cable	L: 1,000mm	
	SD Card reader	USB to SD(Support SDHC, SDXC)	
	SD Card	Support max 128G	
	GPS	L: 3000mm	
	C-MIC	L: 3,000mm	Option
	SCREW	4pcs	
Manual	1pcs		

Related camera

STC-960H-01

- Water Proof Design
- Aluminum Die casting
- 1/3" 520K Super HAD Color CCD
- Built-in 11 IR LEDs
- Pixel Array: NTSC- 976x582 (H x V)
PAL- 976X494 (H x V)
- Resolution: 700TVL
- Max Power Current: 150mA(IR ON)
- ANGLE OF VIEW:
94.2°(H)X69.9°(V)X129°(D)



Dimension:

41(H)X54(W)X53(D) : Camera

80(H)X60(W)X75(D) : with bracket

STC-960HIR-01



- Water Proof Design
- Aluminum Die casting
- 1/3" 520K Super HAD Color CCD
- Pixel Array: NTSC- 976x582 (H x V)
PAL- 976X494 (H x V)
- Resolution: 700TVL
- Max Power Current: 150mA(IR ON)
- ANGLE OF VIEW:
94.2°(H)X69.9°(V)X129°(D)

Dimension:

41(H)X54(W)X53(D) : Camera

80(H)X60(W)X75(D) : with bracket

Smart PC Viewer

